



**FITTING INSTRUCTIONS FOR DG0024 DOWNPIPE GRILLE**  
**HONDA CBR250RR 2017**



**THIS KIT CONTAINS THE ITEMS PICTURED AND LABELLED BELOW.**  
**DO NOT PROCEED UNTIL YOU ARE SURE ALL PARTS ARE PRESENT.**

Please note that the way the kit is packed does not necessarily represent the way of mounting to the bike

Please note that in cases where kits are packed with rubber washers holding the components onto the bolt – *the rubber washers should be thrown away!*

THE PARTS SHOWN MAY BE REPRESENTATIVE ONLY (FOR CLARITY OF INSTRUCTIONS ONLY)

**GENERAL TORQUE SETTINGS**

M4 BOLT = 8Nm  
 M5 BOLT = 12Nm  
 M6 BOLT = 15Nm  
 M8 BOLT = 20Nm  
 M10 BOLT = 40Nm

**TOOLS REQUIRED**

- Socket set to include 10mm socket, wrench & extension.
  - 4, & 5mm Allen keys.

**In This Kit There Should Be**

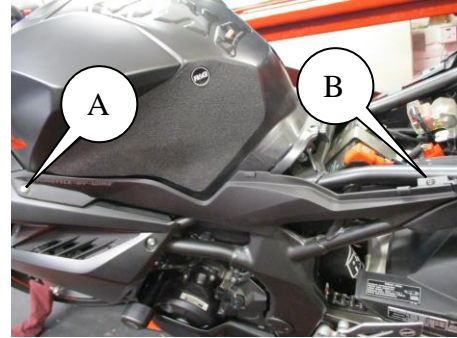
1x Downpipe Grille (DG0024).  
 2 x Spacers (S1014)  
 2 x M6 x 20mm long button head bolts  
 1 x M6 x 15mm long button head bolt  
 4 x M6 washers  
 1 x M6 nyloc nut

R&G Racing, Unit 1 Shelleys Lane, East Worldham, Alton, Hants GU34 3AQ

Tel: +44 (0)1420 89007 Fax: +44 (0)1420 87301 [www.rg-racing.com](http://www.rg-racing.com) Email: [info@rg-racing.com](mailto:info@rg-racing.com)



Picture 1



Picture 2



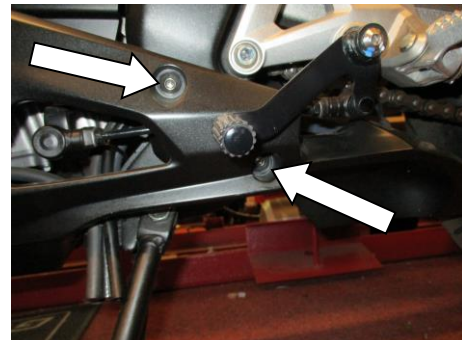
Picture 3



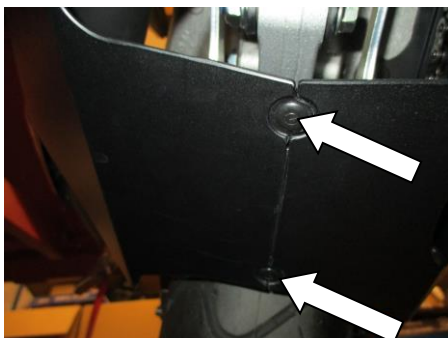
Picture 4



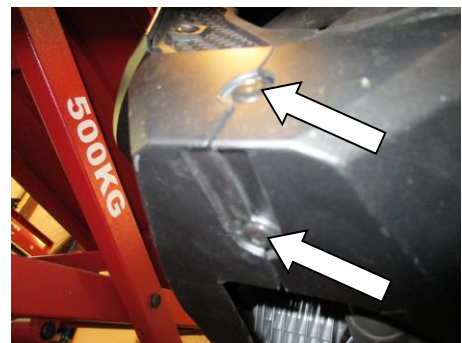
Picture 5



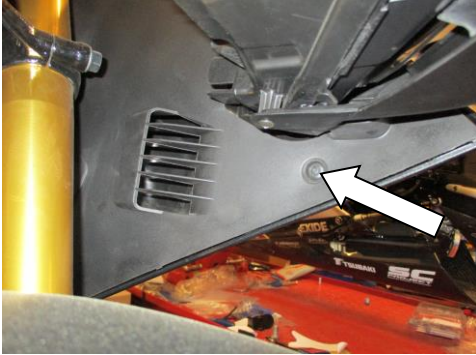
Picture 6



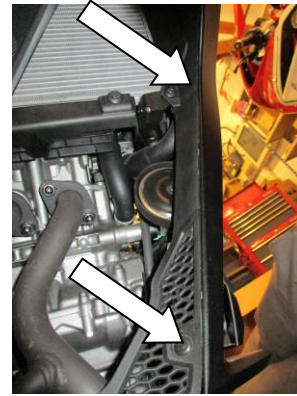
Picture 7



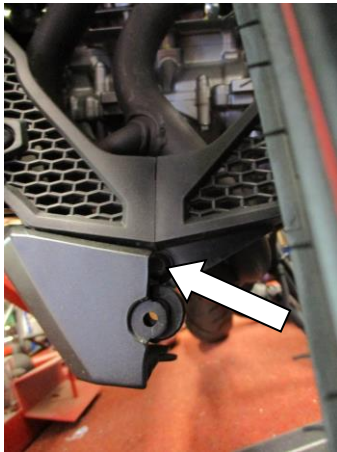
Picture 8



Picture 9



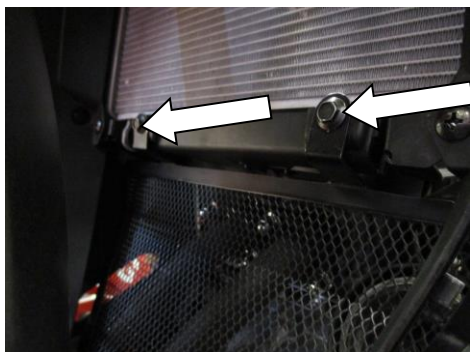
Picture 10



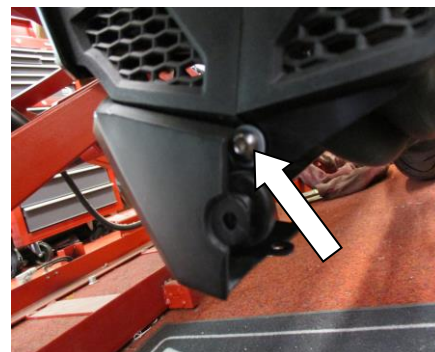
Picture 11



Picture 12



Picture 13



Picture 14





## **FITTING INSTRUCTIONS**

- To fit R&G downpipe grill, the LHS fairing needs to be removed. First, from the underside of the rider seat, remove the two black bolts and its spacers using 10mm socket and a wrench, labelled A in Picture 1. Remove the rider seat.
- From picture 2, remove bolt A using 5mm Allen key and screw B using a phillips screwdriver. Remove the LHS panel by sliding it off backwards.
- From the upper top LHS fairing, remove the two bolts arrowed in Picture 3 using 5mm Allen key.
- From the inside of the same panel, remove the push-in pin arrowed in Picture 4. Push the centre of the pin then remove the whole pin unit.
- On the mid area of the LHS fairing, remove the bolt arrowed in Picture 5 using a 5mm Allen key.
- On the lower side rear of the LHS fairing, remove the two bolts arrowed in Picture 6 using a 5mm Allen key.
- On the underside rear of the LHS fairing, remove the two push-in pins arrowed in Picture 7.
- On the underside front of the LHS fairing, remove the two push in pins arrowed in Picture 8.
- On the inside upper LHS fairing, remove the push-in pin arrowed in Picture 9.
- On the inside mid and lower LHS fairing, remove the two push-in pins arrowed in Picture 10.
- Gently unclip the LHS fairing from the infill panel. Once fully unclipped, gently pull the fairing away from the bike.
- On the lower frontal infill panel, remove the push-in pin arrowed in Picture 11.
- Using a 10mm socket and a wrench remove the two OEM bolts arrowed in Picture 12.
- From the kit, take the downpipe grill, insert it from the LHS and align the two top mounting points to the radiator. Secure using the OEM bolts removed earlier. Shown in Picture 13.
- If fitting the downpipe grill together with R&G radiator guard, place the two small spacers in the top two mounting points and secure using the two longer M6 bolts and washers provided in the kit.
- From the kit, take the shorter M6 bolt with M6 washer and locate on the bottom mount of the infill panel. Align the bottom mount of the downpipe grill with the bolt just fitted, insert another M6 washer from behind and secure with M6 nyloc nut. Shown in Picture 14.
- Refit the LHS fairing and side panel as original.
- Refit the rider seat as original

ISSUE 1 12/05/2017 (HH)

**Digital copies of these instructions are available to download from [www.rg-racing.com](http://www.rg-racing.com)**

### **CONSUMER NOTICE**

The catalogue description and any exhibition of samples are only broad indications of the Products and R&G may make design changes which do not diminish their performance or visual appeal and supplying them in such state shall conform to the order. The Buyer acknowledges no representation or warranty (other than as to title) has been given or will apply to the Products other than those in R&G's order or confirmation and the Buyer confirms it has chosen the Products as being of merchantable quality and suitable for its particular purposes. Where R&G fits the Products or undertakes other services it shall exercise reasonable skill and care and rectify any fault free of charge unless the workmanship has been disturbed. The Buyer is responsible for ensuring that the warranty on the motorcycle is not affected by the fitting of the Products. On return of any defective Products R&G shall at its option either supply a replacement or refund the purchase money but shall not be liable if the Products have been modified or used or maintained otherwise than in accordance with R&G's or manufacturer's instructions and good engineering practice or if the defect arises from accident or neglect. Other than identified above and subject to R&G not limiting its liability for causing death and personal injury, it shall not be liable for indirect or consequential loss and otherwise its liability shall be limited to the amounts paid by the Buyer for the Products or the fitting or service concerned. These terms do not affect the Buyer's statutory rights.

### **R&G RACING RETURNS POLICY (NON-FAULTY GOODS)**

Returns must be pre-authorized (if not pre-authorized the return will be rejected). Goods may only be returned direct to us if they were purchased direct from us (customer must prove if necessary). Otherwise to be returned to original vendor. Goods must be in re-sellable condition, in the opinion of R&G Racing. All returns are subject to a 25% restocking and handling fee (25% of the gross value exc. P&P – at the prevailing price at time of purchase). The customer must pay any and all carriage charges. No returns of discontinued products, unless within 14 days of purchase. This policy does not affect your statutory rights and does not refer to faulty goods.

R&G Racing, Unit 1 Shelleys Lane, East Worldham, Alton, Hants GU34 3AQ

Tel: +44 (0)1420 89007 Fax: +44 (0)1420 87301 [www.rg-racing.com](http://www.rg-racing.com) Email: [info@rg-racing.com](mailto:info@rg-racing.com)



**NOTICE DE MONTAGE POUR DG0024 GRILLE DE PROTECTION DES  
COLLECTEURS D'ÉCHAPPEMENT  
HONDA CBR250RR 2017**



**Le kit contient les articles exposés ci-dessous, vérifier que toutes les pièces soient présentes avant de procéder au montage.**

**La façon dont le kit est emballé ne correspond pas forcément à la façon de monter les pièces sur la moto.**

Notez que si les kits sont emballés avec des rondelles en caoutchouc servant à tenir les composants, *ces rondelles doivent être jetées !*  
**LES PARTIES PRESENTÉES PEUVENT ÊTRE UNIQUEMENT REPRESENTATIVES (POUR LA CLARTE  
 DES INSTRUCTIONS UNIQUEMENT.**

**VALEURS DE SERRAGE RECOMMANDÉES**

M4 BOULON = 8Nm  
 M5 BOULON = 12Nm  
 M6 BOULON = 15Nm  
 M8 BOULON = 20Nm  
 M10 BOULON = 40Nm

**OUTILS REQUIS**

- Clé à cliquet + douille 10mm & extension.
  - Clés Allen 4, & 5mm.

**Le kit doit contenir:**

1x Grille de protection des collecteurs (DG0024).  
 2 x Entretoises (S1014)  
 2 x M6 x 20mm Boulons  
 1 x M6 x 15mm Boulon  
 4 x M6 Rondelles  
 1 x M6 Ecou



Photo 1

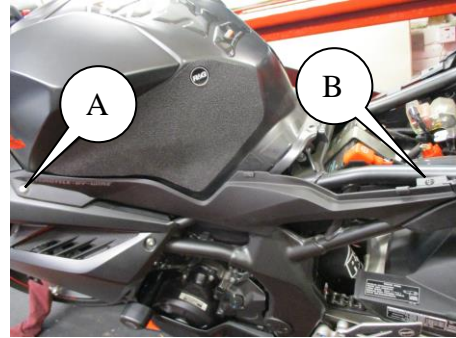


Photo 2



Photo 3



Photo 4



Photo 5

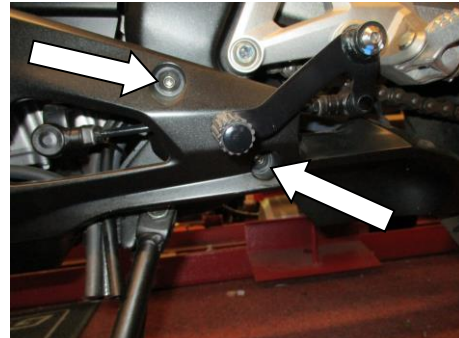


Photo 6

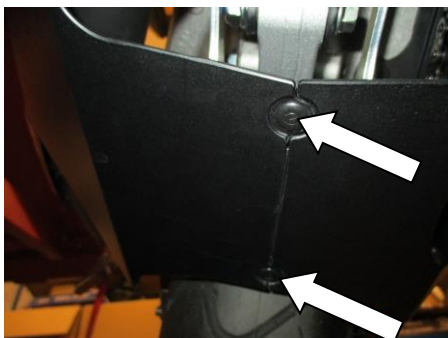


Photo 7

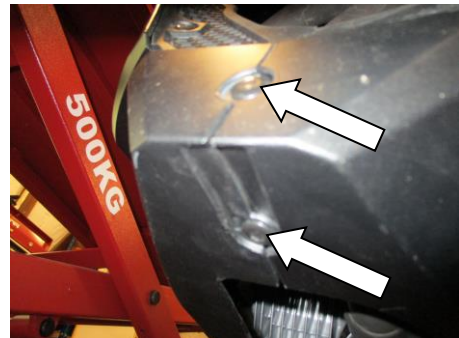


Photo 8



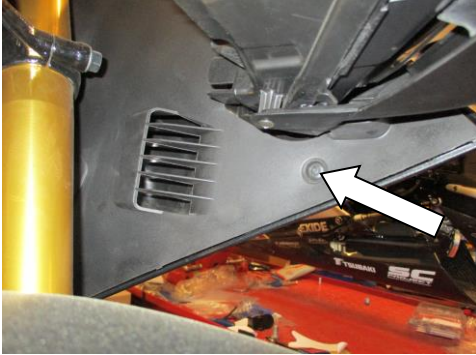


Photo 9

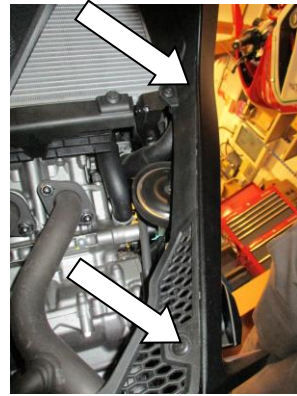


Photo 10

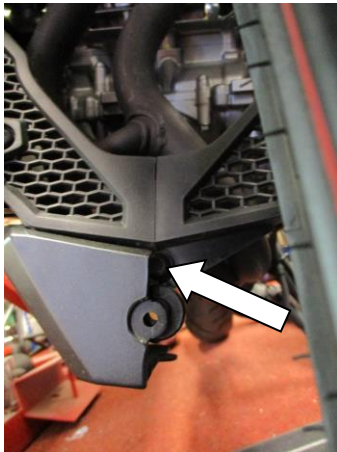


Photo 11



Photo 12

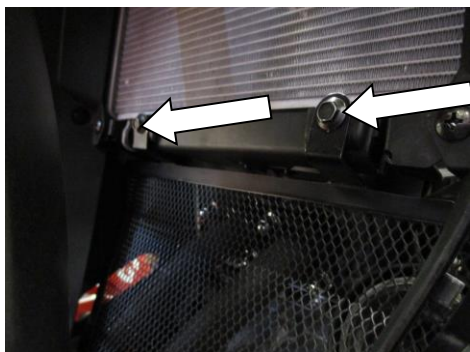


Photo 13

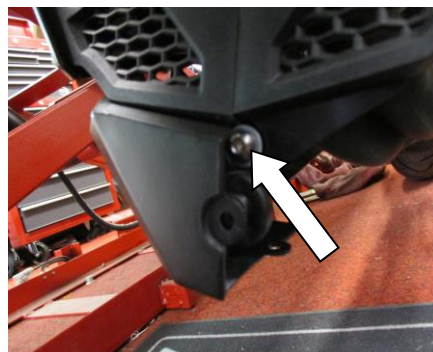


Photo 14



## NOTICE DE MONTAGE

- Pour monter la grille, vous devez enlever le carénage du côté gauche. Commencez par enlever le siege du pilote par le dessous, enlever les 2 boulons et leurs entretoises en utilisant une clé à molette de 10mm, voir A sur la Photo 1. Enlever le siege du pilote.
- Sur la photo 2, enlever le boulon A en utilisant une clé Allen 5mm puis visser B en utilisant un tournevis cruciforme. Enlever le panneau du côté gauche en le glissant vers le bas.
- Sur la partie supérieure du carénage gauche, enlever les 2 boulons indiqués sur la Photo 3 en utilisant une clé Allen 5mm.
- A l'intérieur du même panneau, enlever la broche visible sur la Photo 4. Pousser le centre de la broche puis enlever toute l'unité de broche.
- Au milieu du carénage gauche, enlever le boulon visible sur la Photo 5 en utilisant une Clé Allen 5mm.
- Sur la partie basse à l'arrière du carénage gauche, enlever les 2 boulons indiqués sur la Photo 6 en utilisant une Clé Allen 5mm.
- Sur la partie basse à l'arrière du carénage gauche, enlever les 2 broches visibles sur la Photo 7.
- Sur la partie basse à l'avant du carénage gauche, enlever les 2 broches visibles sur la Photo 8.
- A l'intérieur du carénage gauche supérieur, enlever la broche visible sur la Photo 9.
- A l'intérieur du carénage gauche, sur la partie du milieu ou la partie inférieure, enlever les broches visibles sur la Photo 10.
- Déclipser le carénage gauche du panneau interne. Une fois qu'il est complètement déclipé, retirer le carénage de la moto.
- Sur la partie basse à l'avant du panneau interne, enlever la broche visible sur la Photo 11.
- A l'aide d'une clé à molette de 10mm, enlever les 2 boulons d'origine visible sur la Photo 12.
- Dans le kit, prendre la grille de protection, insérez-la du côté gauche, et alignez les 2 point de fixation supérieurs sur le radiateur. Fixer à l'aide des boulons d'origine enlevés un peu plus tôt, voir Photo 13.
- Si vous montez la grille de façon solidaire avec la grille de protection radiateur R&G, placer les 2 petites entretoises sur les 2 points de fixation supérieurs, puis fixer à l'aide des 2 boulons M6 et des rondelles fournies.
- Dans le kit, prendre le boulon M6 le plus court, avec une rondelle M6 puis placez le au bas du panneau interne. Aligner le support inférieur de la grille de protection des collecteurs avec le boulon tout juste inséré. Insérer une rondelle M6 par derrière puis fixer avec un écrou M6, voir Photo 14.
- Remonter le carénage du côté gauche puis glisser le panneau comme à l'origine.
- Remonter le siege du pilote comme à l'origine.

ISSUE 1 12/05/2017 (HH)

**Notice disponible au téléchargement sur [www.rg-racing.com](http://www.rg-racing.com)**

### CONSUMER NOTICE

The catalogue description and any exhibition of samples are only broad indications of the Products and R&G may make design changes which do not diminish their performance or visual appeal and supplying them in such state shall conform to the order. The Buyer acknowledges no representation or warranty (other than as to title) has been given or will apply to the Products other than those in R&G's order or confirmation and the Buyer confirms it has chosen the Products as being of merchantable quality and suitable for its particular purposes. Where R&G fits the Products or undertakes other services it shall exercise reasonable skill and care and rectify any fault free of charge unless the workmanship has been disturbed. The Buyer is responsible for ensuring that the warranty on the motorcycle is not affected by the fitting of the Products. On return of any defective Products R&G shall at its option either supply a replacement or refund the purchase money but shall not be liable if the Products have been modified or used or maintained otherwise than in accordance with R&G's or manufacturer's instructions and good engineering practice or if the defect arises from accident or neglect. Other than identified above and subject to R&G not limiting its liability for causing death and personal injury, it shall not be liable for indirect or consequential loss and otherwise its liability shall be limited to the amounts paid by the Buyer for the Products or the fitting or service concerned. These terms do not affect the Buyer's statutory rights.

### R&G RACING RETURNS POLICY (NON-FAULTY GOODS)

Returns must be pre-authorized (if not pre-authorized the return will be rejected). Goods may only be returned direct to us if they were purchased direct from us (customer must prove if necessary). Otherwise to be returned to original vendor. Goods must be in re-sellable

R&G Racing, Unit 1 Shelleys Lane, East Worldham, Alton, Hants GU34 3AQ

Tel: +44 (0)1420 89007 Fax: +44 (0)1420 87301 [www.rg-racing.com](http://www.rg-racing.com) Email: [info@rg-racing.com](mailto:info@rg-racing.com)





condition, in the opinion of R&G Racing. All returns are subject to a 25% restocking and handling fee (25% of the gross value exc. P&P – at the prevailing price at time of purchase). The customer must pay any and all carriage charges. No returns of discontinued products, unless within 14 days of purchase. This policy does not affect your statutory rights and does not refer to faulty goods.